



**XV WORLD  
FORESTRY CONGRESS**



**AgroFor**

# **Conserve, Restore and Produce**

Opportunities for slowing forest loss and accelerate restoration while stabilizing livelihoods through Agroforestry Concessions in Peru



**Valentina Robiglio**


**CIFOR-ICRAF**

Land Use Systems scientist, Agroforestry science lead for Peru and Latin America

# Post-deforestation landscapes

- 120 th ha of forest lost every year  
90% from small-scale agriculture
- **Conversion is context dependent, mostly by commodities and commercial crops**
- 3.5M ha managed by 460 th family farmers

**2021 peaked at  
200 thousands ha**



**Farmers  
manage 1.45  
M Ha of forest  
and 0.5 M Ha  
of fallow land  
+ 36% trees on  
farm**



# Agroforestry Concessions (AC)

- 1.5M ha on legal forest land
- No tenure title can be granted

**More than 120 th  
thousand families  
do not hold formal  
land access rights**



**Forestry and  
Wildlife Law**  
introduced **AC** as an  
**enabling title**  
granted on State  
forest land to  
formalize **small scale  
forestry** rights as a  
strategy to conserve  
forest and restore ES.  
(2011-2017)

# Mechanics of ACs contracts

- 40 years (renewable )



## Requirements

- Settling before 2011
- Suitable forest zone categories
- Civil legal responsibility

- 3 competent authorities of the forest sector



## Conditionalities

- Conserve forest
- Agroforestry
- Soil and water sources
- Pay for logging rights

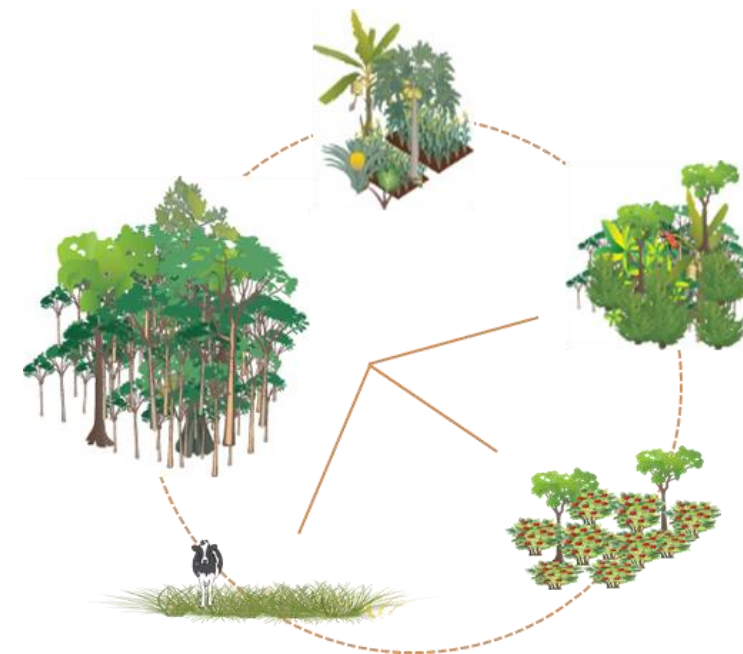


## Incentives

- Access to market and financial services
- Technical assistance
- Simplified procedures
- Mortgage guarantee



# Agroforestry mosaic at farm level



**Multiple agroforestry and small scale forestry practices, however lack of technical capacities by farmers and institutions**

# Potential beneficiaries

120 thousands family farmers across the Amazon:  
tailored approaches are required !



**78%**

**Small-scale farmers**

<10 ha upper jungle  
<15 ha lowland jungle



**22%**

**Medium-scale farmers**

10-50 ha upper jungle  
15-115 ha lowland jungle



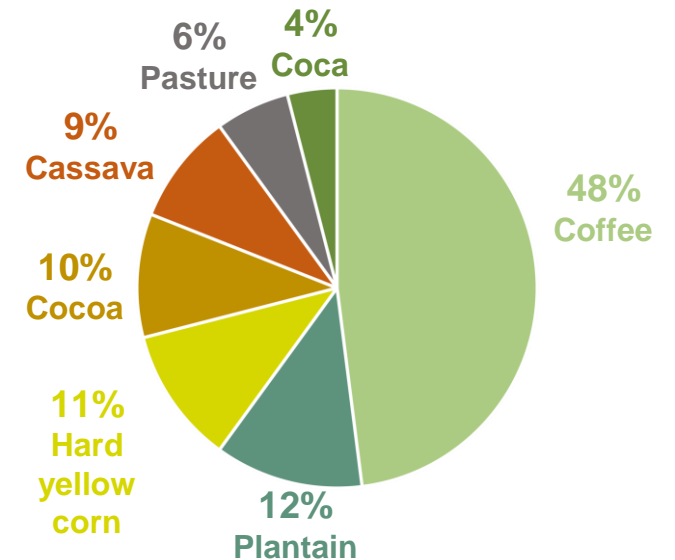
**Livelihoods and diversification:**

**100%** diversify

**21%** NO off-farm income

**<20%** associated

**Main cultivated crops by  
% of farmers :**

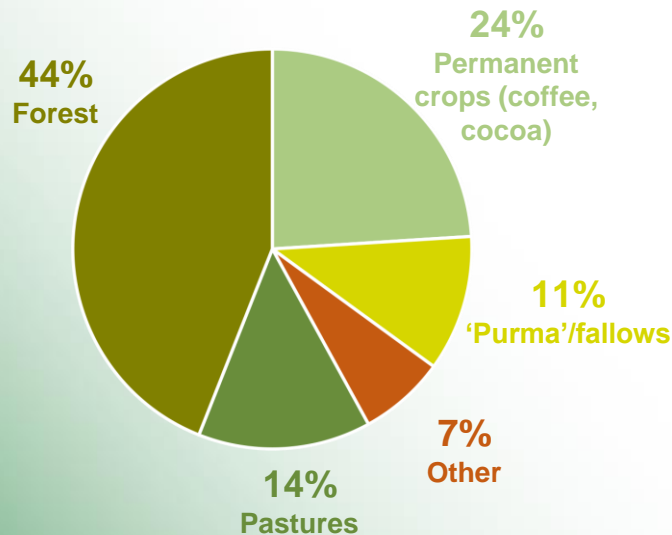


**others local VCs not  
reported e.g. forest  
(change by context)**

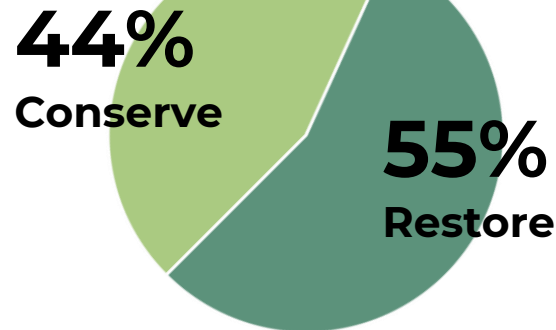
# CC and conservation outcomes

depend on interventions at the landscape level

## Farm composition\* (surface area):



> 1.2 M ha



**AVOIDED DEFORESTATION**  
Emission reduction potential -20.3% of  
LULUCF emissions (2012 GHG inventory)

**AGROFORESTRY BASED  
RESTORATION** increases the  
potential of carbon storage in  
**3345 Gg CO<sub>2</sub>** per year

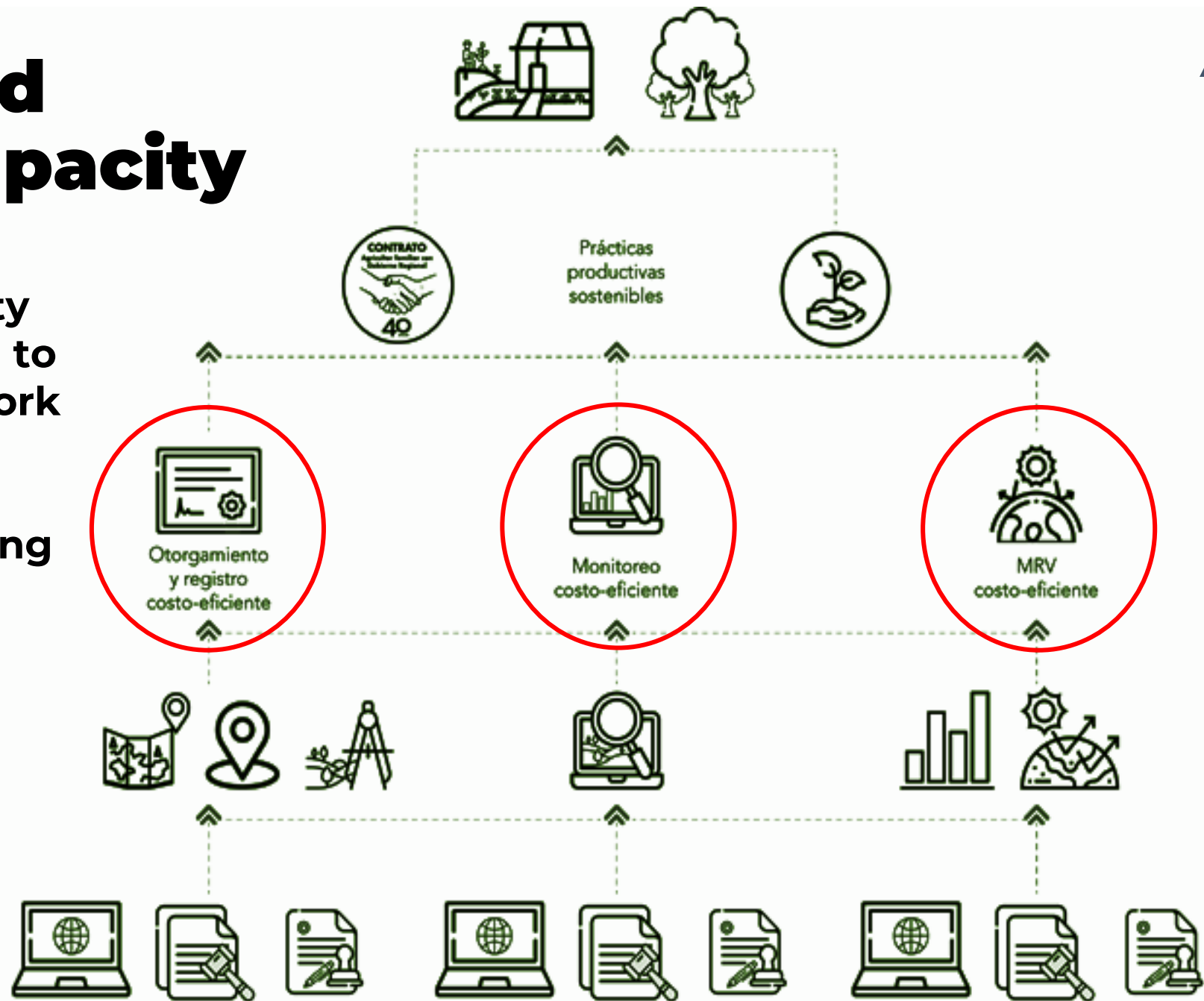




# Governance and Institutional capacity

↑ Build institutional capacity across governance levels to refine regulatory framework and enforce it

- granting and registering
- management and supervision
- monitoring





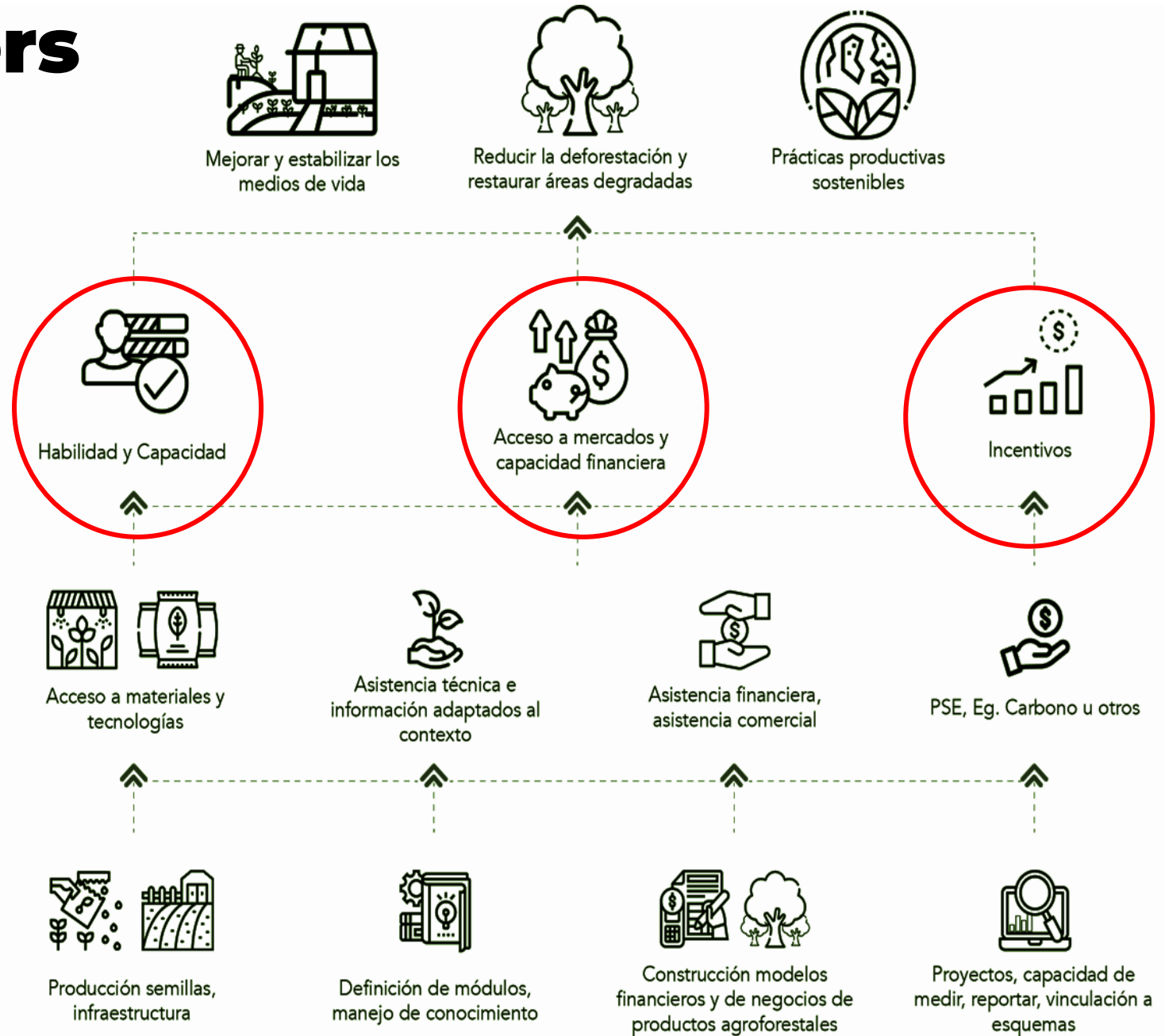
# Support to farmers for long term outcomes



capacities and capabilities  
financial and market



PES like  
incentives/carbon and  
ES market based  
schemes







**ACs strategic transformational potential, require a comprehensive programmatic and intersectoral approach across governance levels**

**JuanJuan Rodríguez, Paraiso (San Martín)**



**Leonor Pérez, Progreso (San Martín)**



XV WORLD  
FORESTRY CONGRESS







# XV WORLD FORESTRY CONGRESS

# Thank you.



# PARA



Solidaridad



giz



# AgroFor



Norway's International Climate and Forest Initiative



Norad

Building a Green, Healthy and Resilient Future with Forests

2-6 May 2022 | Coex, Seoul, Republic of Korea